



FUTURE OF AIR SOLUTION



– Along with 7.5kW Scroll Air-End –

OIL FREE SCROLL COMPRESSOR



Oilfree Compressor

ScrollAir

since 1991

THE WORLD FIRST OIL FREE SCROLL COMPRESSOR

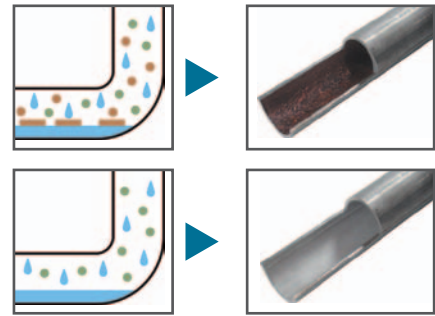
Features

- Pioneer of oilfree scroll technology
- Clean & safe
Absolutely no oil anywhere in the compressor chamber
- Ultra quiet enclosed unit
- Low vibration
- Low maintenance cost
- Low starting torque
- Integral cooling fan
- High pressure units available



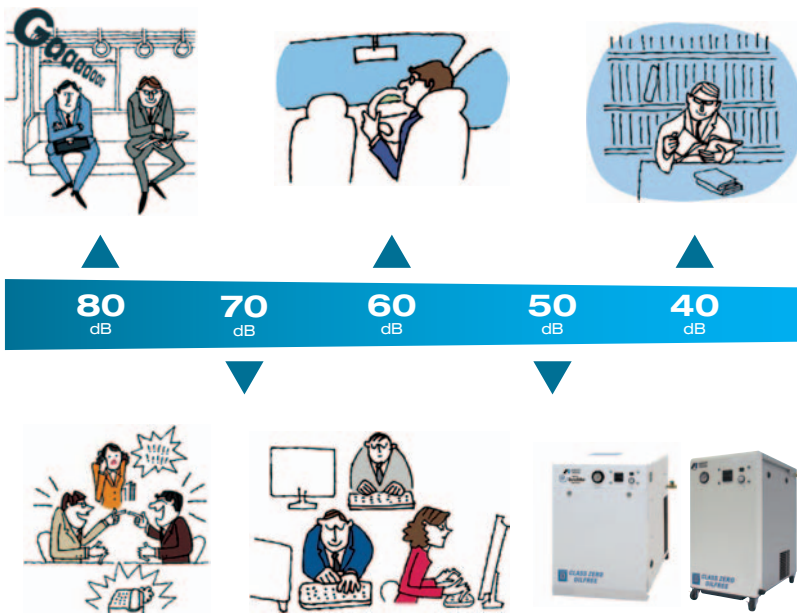
Oil-free

Delivered air does not contain any oil and is suitable for all applications where oil-free air is essential.



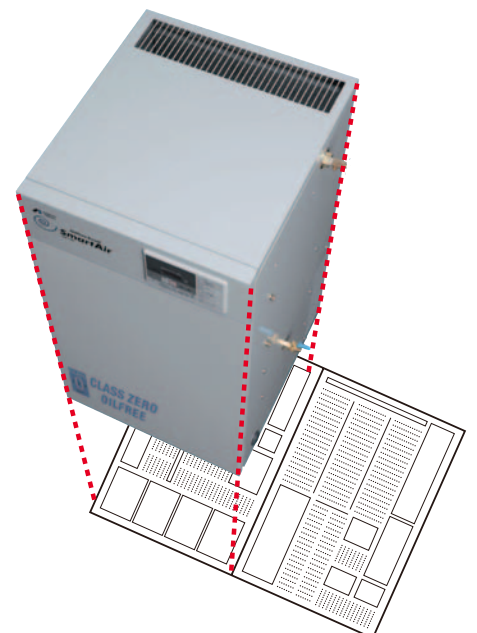
Silent

Oil-free scroll mechanism has very small torque fluctuation as well as low noise and vibration.



Compact

Up to 5HP(3.7kW) compressor has a only footprint of a newspaper.



Applications



Laboratories



Dental Clinics



Semiconductor development



Medical operation



Large scale painting



Food factory

No necessary for drain treatment

Proper drain treatment is required as drainage from the oil lubricated air compressor contains oil. It's friendly on environment and cost as drainage from the oil-free air compressor does not contain oil and it's clean.



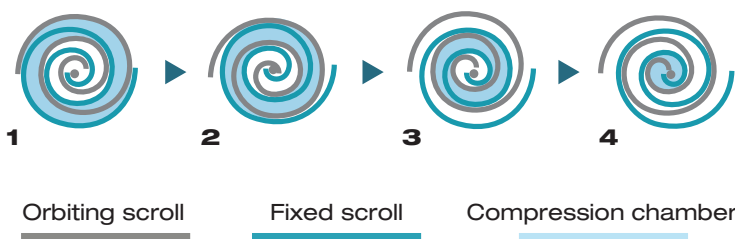
drainage from the oil-free air compressor



drainage from the oil lubricated air compressor

Compression principle of oil-free scroll compressor

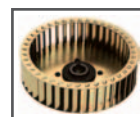
As the orbiting scroll orbits from No. 1 to No. 4, a crescent shaped compression room at the point symmetry position is gradually reduced, compressed and exhausted through the outlet at the center.



Fixed scroll



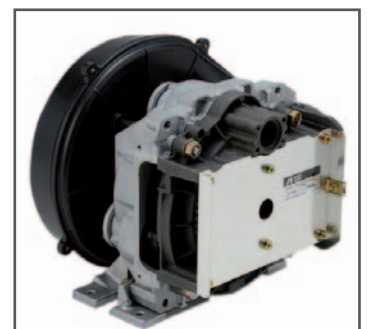
Orbiting scroll



Cooling fan



Tip seal





Oilfree Compressor
ScrollAir
since 1991

**8.000 HOURS
MAINTENANCE FREE**
except intake filter



**CLASS ZERO
OILFREE**

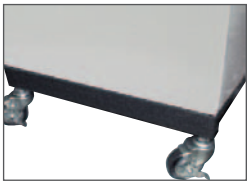
0.75 kW (1HP) Scroll Compressor



Features

- 8.000 hours maintenance free
- Oil-free
- Ultra quiet
- Low vibration
- Compact
- Wheels for relocating

49dB(A)



Easy carrying, with wheels



SLPE-07E



Scroll air-end (1HP)



**Aluminium air receiver
(anti-rust coated)**

Model	Motor Rated Output	Operation Control	Max. Working Pressure		F.A.D. (*1)	Noise Level(*2)	Air Outlet	Pressure dew point	Internal tank	Dimensions (wxdxh)		Weight	Voltage
	kW (HP)		bar (MPa)	psi						L/min (cfm)	mm		
SLPE-07E	0.75kW(1)	Pressure switch	8 (0.8)	116	70 (2.4)	49	G1/4	-	5	335x590x690	50	230/50/single	
SLPE-07ED (coming soon)					60 (2.1)			below 15		335x660x690	52		

*1 F.A.D. is measured at max working pressure.

*2 Noise level measured at a distance of 1M according to ISO11201; tolerance±3dB

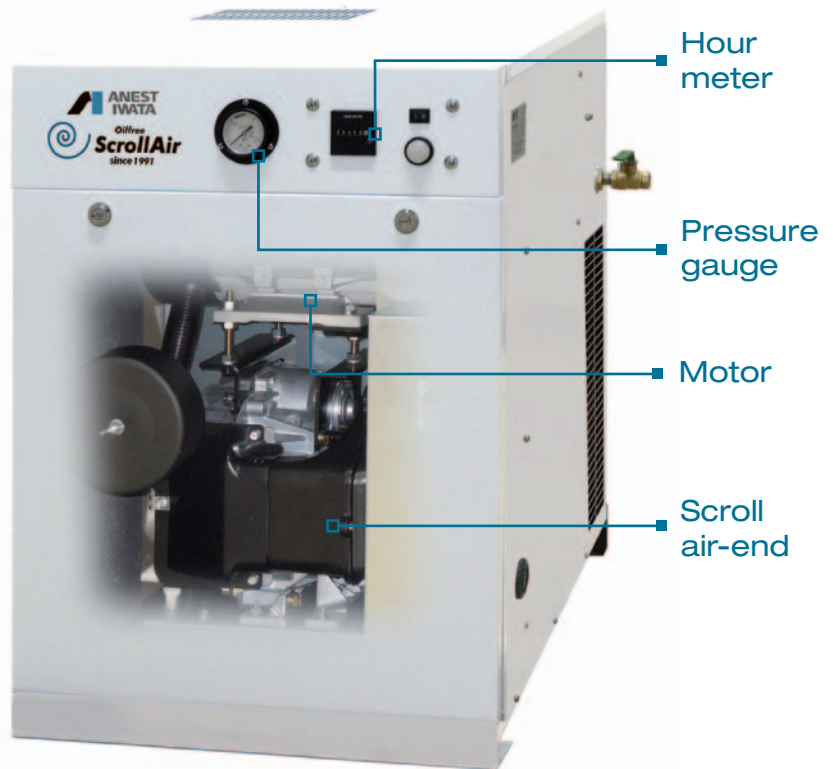


2.2 kW (3HP) - 3.7 kW (5HP) Scroll Compressor



Features

- 10.000 hours maintenance free
- Oil-free
- Low vibration
- Easy operation



SLPE-22(1)E/37(1)E

Oil-free

Delivered air does not contain any oil and is suitable for all applications where oil-free air is essential.



Model	Motor Rated Output	Operation Control	Max. Working Pressure		F.A.D. (*1)	Noise Level(*2)	Air Outlet	Dimensions (wxdxh)	Weight	Voltage
	kW (HP)		bar (MPa)	psi	L/min (cfm)	dB(A)	-	mm	kg	Volt/Hz/phase
SLPE-22E	2.2 (3)	Pressure switch	8 (0.8)	116	243 (8.5)	61	Rc 3/8 [ball valve]	535x686x743	87	230/50/single 400/50/three
SLPE-221E			10 (1.0)	145	207 (7.3)					
SLPE-37E	3.7 (5)		8 (0.8)	116	404 (14.2)					
SLPE-371E			10 (1.0)	145	337 (11.9)				101	400/50/three

*1 F.A.D. is measured at max working pressure.

*2 Noise level measured at a distance of 1M according to ISO11201; tolerance±3dB





Accessory for air compressor

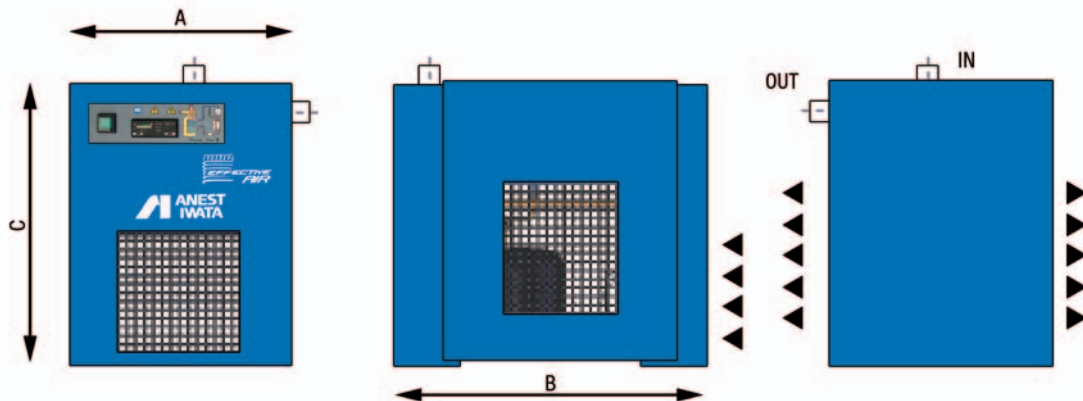
Refrigerated air dryer

Refrigerated Air Dryers allow the best performance of Effective Air single stage and two stages twin cylinders belt driven air compressors. The units incorporate an electronic control to monitor all functions. A hot gas bypass valve, which modulated the capacity of the refrigerating compressor, avoids the ice formation. The vertical flow lay out allows easy access to the drain valve.



AID-6 / AC

AID-12 / AC



Model name	Max. air flow	Compressor combination	Connection	Power supply	Weight	Dimension
	L/min	kW (HP)	in-out	Volt/Hz	kg	wxdxh
AID-6/AC	600	4kW(5.5HP)	G1/2	230/50	25	370x515x475
AID-12/AC	1200	7.5kW(10HP)			28	

Data refer to the following nominal condition: ambient temperature of 25°C, with inlet air 7 bar and 35°C, and 5°C pressure dewpoint (-20.5°C atmospheric pressure dewpoint).
 Max. working condition: ambient temperature 45°C, inlet air temperature 55°C and inlet air pressure 14 bar (16 bar for AID-6 to AID-12).



Accessory for air compressor



Air Receiver Tank (Vertical)

Model name	Max. working pressure	Capacity	Connection	Weight	Dimension
	MPa (bar)				
N87FY000	1.1(11)	100	G3/8-3/4	37	370x370x1156
N87LY000		200			
N87NY000		270	80	500x500x1648	
N87TY000		500			135

**equipped with safety valve, pressure gauge, air release valve and drain valve*



Air filter with auto drain

Model name	Max. working pressure	Filtrating	Connection	Weight	Dimension
	MPa (bar)				
F4000-10-WF1Z	1.0(10)	5µ	G3/8*	0.45	80x79x171
F4000-10-WF1Y		0.3µ			
M4000-10-W-F1M		0.01µ			

**also available with other connection sizes from 1/8 to 1 inch*



Auto drain

Model name	Max. working pressure	Connection		Electricity	Weight	Dimension
	MPa (bar)	in-out	outlet (hose size)		kg	wxdxh (mm)
BEKOMAT 32	1.6(16)	G1/2	G1½(φ8-10)	230V/50-60HZ	1.0	179x74x115

**recommended electric cable is 3X 0.75mm²*



Air regulator

Model name	max. working pressure	Setting pressure range	Connection	Weight	Dimension
	MPa (bar)	MPa (bar)			
R6000-20G-W	1.0MPa (bar)	0.05 to 0.85 (0.5-8.5)	G3/4	1	90x90x151

**equipped with pressure gauge*

Safety precisions

Compressor usage

1. Read the instruction manual before use the compressor.
2. The compressor is designed for air compression only and must never be used for any other type of gas.
3. Never use with respiratory equipment which directly suctions compressed air. If done, it may cause serious injury.
4. Never direct the jet of air towards persons or animals or your body.
5. When using compressed air, you must know and comply with the safety precautions to be adopted for the single applications (inflating, pneumatic tools, painting, washing with water based detergents only, etc.)

Compressor Installation

1. The compressor must never be exposed to adverse weather conditions (rain, sun, fog or snow, etc.)
2. Keep the compressor away from explosive and flammable (acetylene or propane, etc) objects to prevent fire and explosion.
3. Install the compressor in proper ambient temperature which are indicated in instruction manual.

Maintenance

1. Do maintenance on compressor routinely based on instruction manual.
2. Drain the water in the receiver tank every day to prevent clogging the drain cock.
3. Never clean the machine with liquids or solvents when cleaning and disconnect the machine from the electricity supply by removing the plug and use a damp cloth only.

Others

1. Never remodel or convert the compressor or parts. If done, it may cause fire or malfunctions.
2. Prepare the back-up compressors or systems in case the compressor stops due to activating protective devices or any malfunctions.

**Safety precautions of the above are minimum requirements.*

Before use, follow safety precautions in the instruction manual and each municipality, county and corporation's regulations.



ANEST IWATA Air Tech s.r.l.

Corso Vigevano, 46 - 10155, Torino - Italy

Tel.+39 011 09 20 111 - Fax +39 011 24 75 727

info@anest-iwataairtech.com - www.anest-iwataairtech.com

Distributed by: